

Parkheath

Sold on Service

Canfield Gardens NW6

£2,400 PCM (£554 per week) - Camden Band E

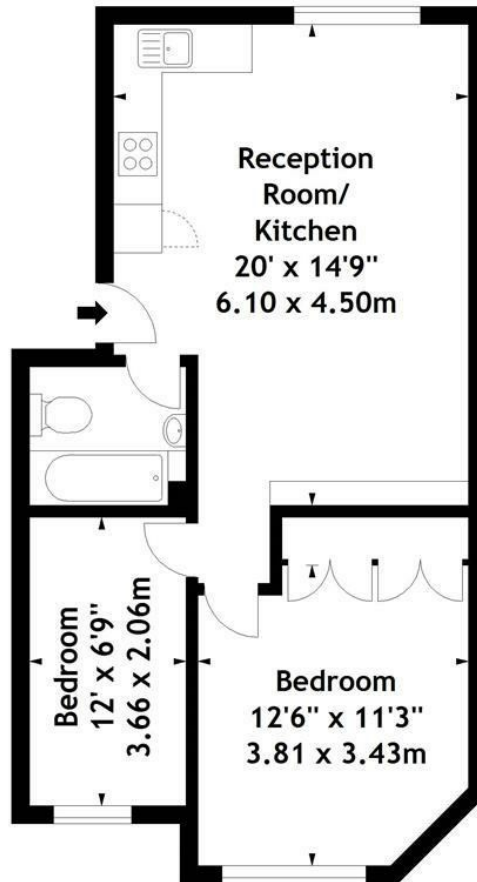


Bright and airy two-bedroom apartment
South Hampstead Conservation Area location
Open plan fitted kitchen
Large main bedroom with built-in storage
Close to Finchley Road Underground & local amenities

Second floor of a period conversion
Spacious reception with open-plan kitchen
High ceilings and neutral décor throughout
Second bedroom (large single/office)
EPC: Rating C, Council Tax: Camden band E

West Hampstead Office 020 7794 7111

Canfield Gardens, NW6
Approx. Gross Internal Area
566 Sq Ft - 52.58 Sq M



Second Floor

Measured in accordance with RICS guidelines. Every attempt is made to ensure accuracy, however all measurements are approximate. This floor plan is for illustrative purposes only and is not to scale.
© Datography Ltd 2014
Photographs * Floorplans * Virtual Tours
Tel: 0845 643 4401 www.datography.com

The particulars do not constitute part of an offer or contract. The particulars, including text, photographs and plans, are for the guidance only of prospective purchasers/tenants and must not be relied upon as statements of fact. The descriptions provided therein represent the opinion of the author and whilst given in good faith should not be construed as statements of fact. Nothing in these particulars shall be deemed a statement that the property is in good condition or otherwise or that any services or facilities are in good working order. All measurements are approximate